



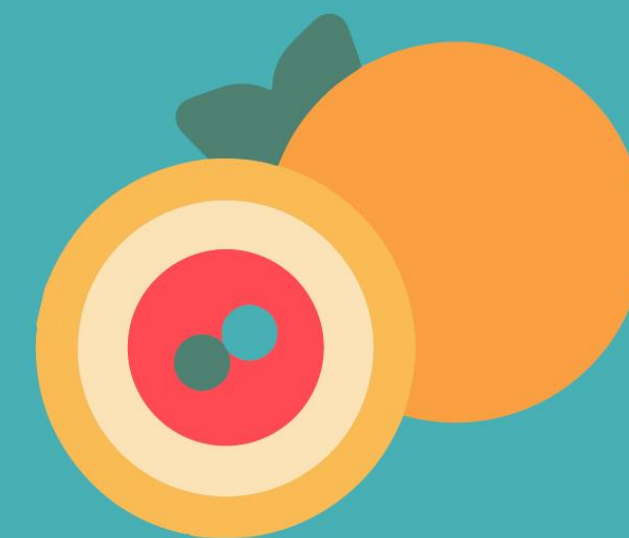
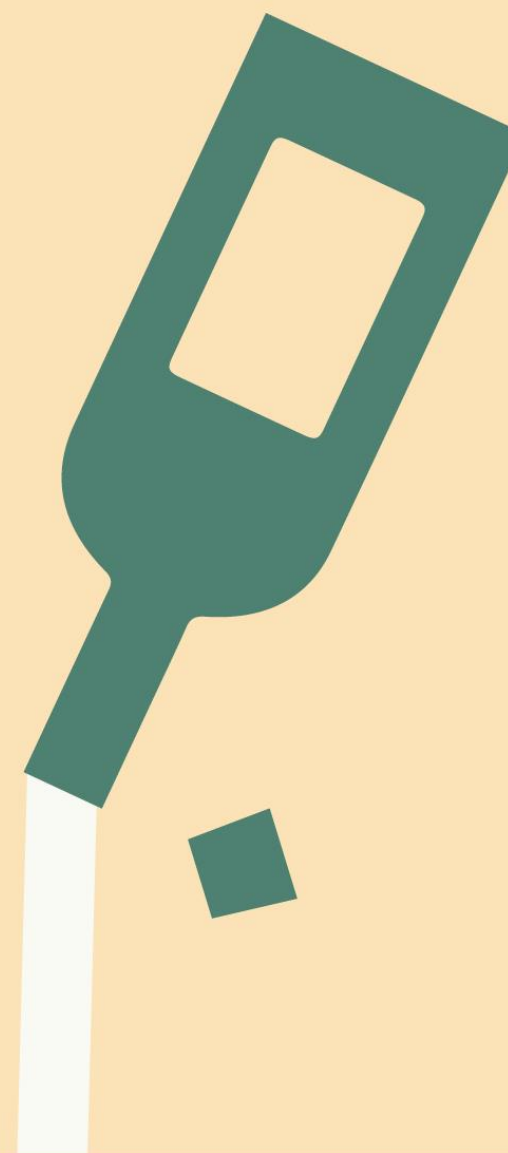
EUROVALVE

& STRUCTURAL CARDIOMYOPATHIES

NH PALERMO



**SAVE
THE DATE**
**OCTOBER
24&25, 2024**



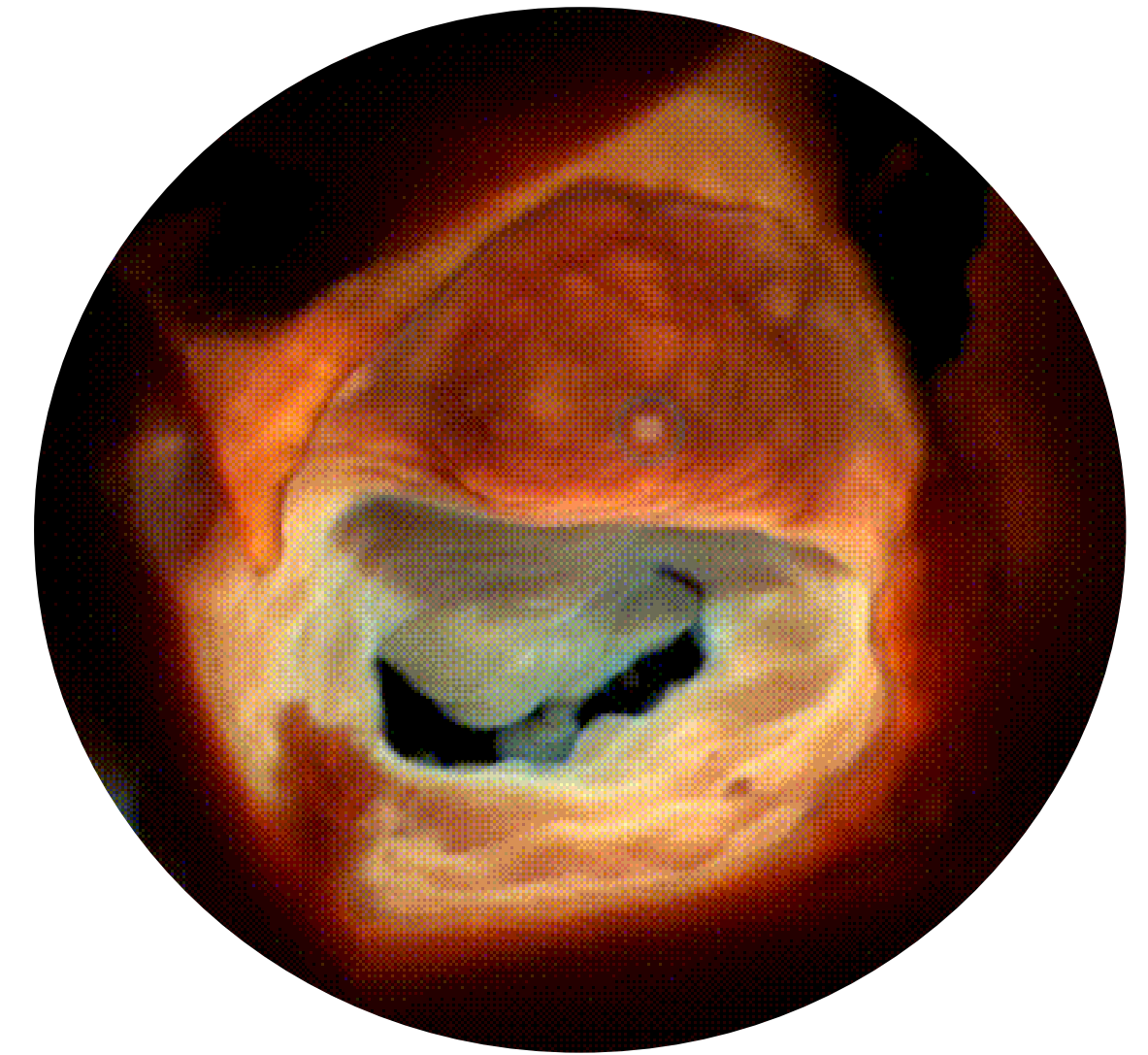
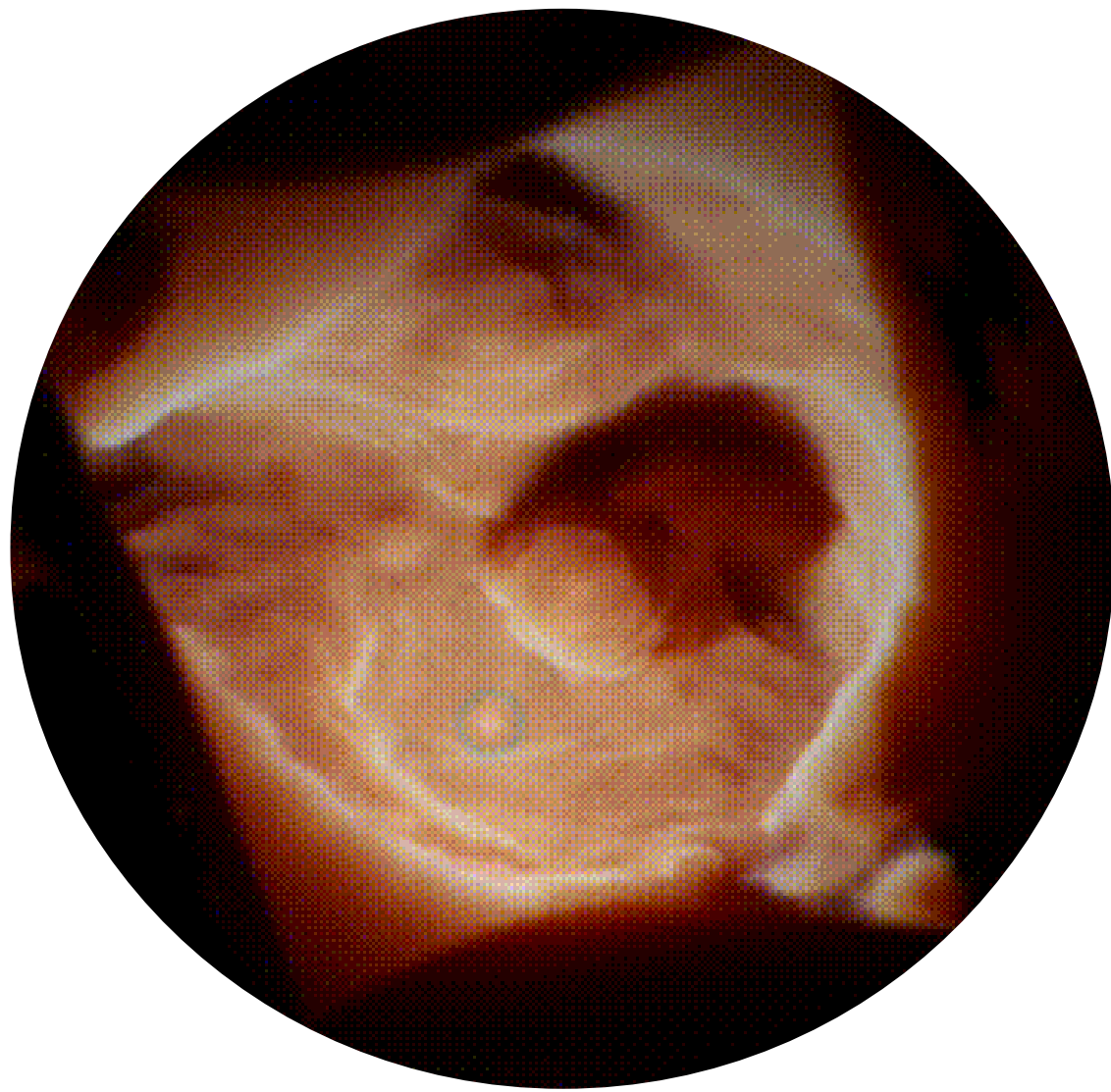
COURSE DIRECTORS

Patrizio Lancellotti, Belgium
Khalil Fattouch, Italy
Gilbert Habib, France
José Luis Zamorano, Spain
Philippe Pibarot, Canada
Mani Vannan, USA
Madalina Garbi, United Kingdom
Bernard Cosyns, Belgium

LOCAL HOST

Khalil Fattouch, Italy

ANTERIOR MITRAL LEAFLET, AORTO-MITRAL CURTAIN AND AORTIC CUSPS: when pathology challenges echo



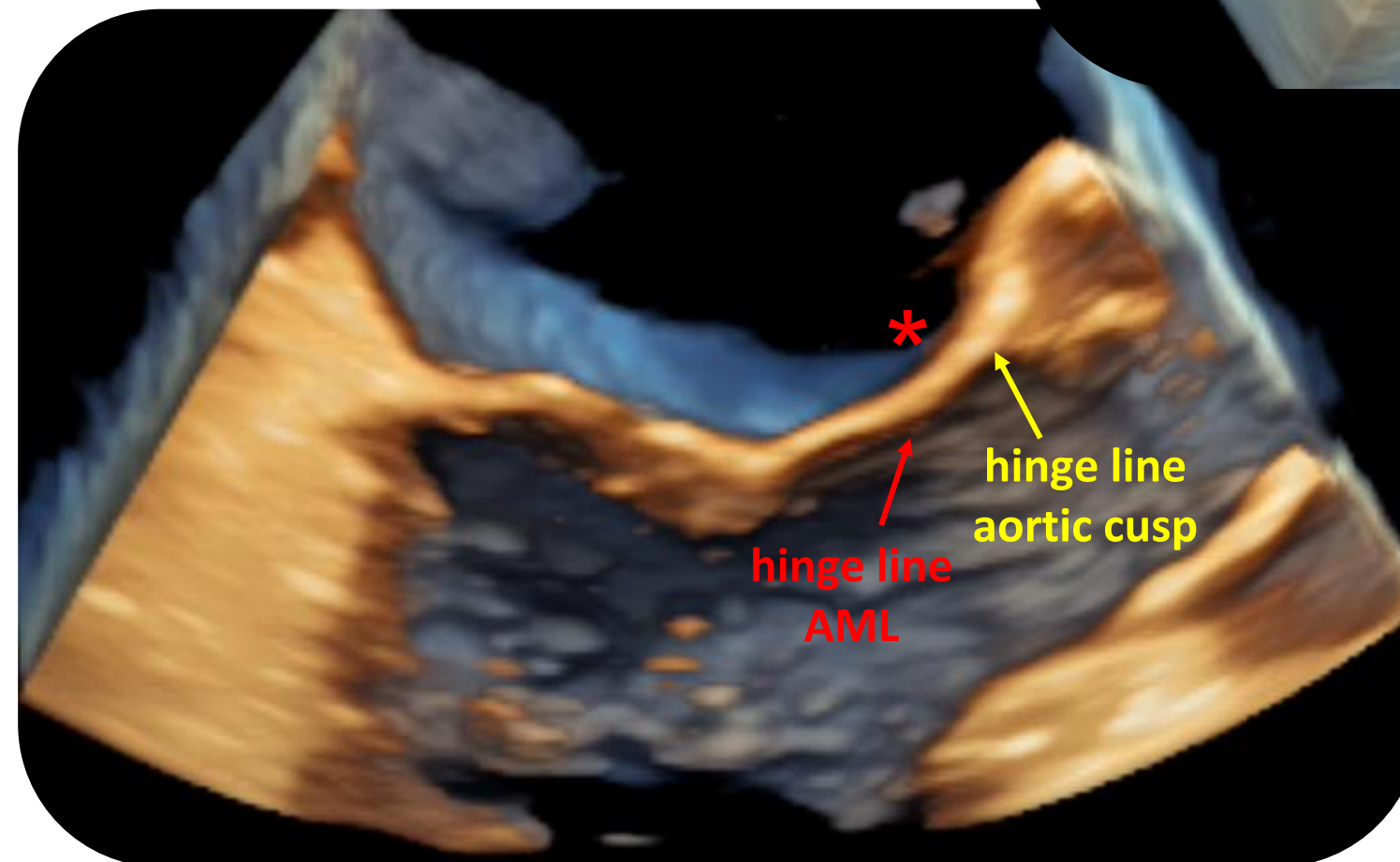
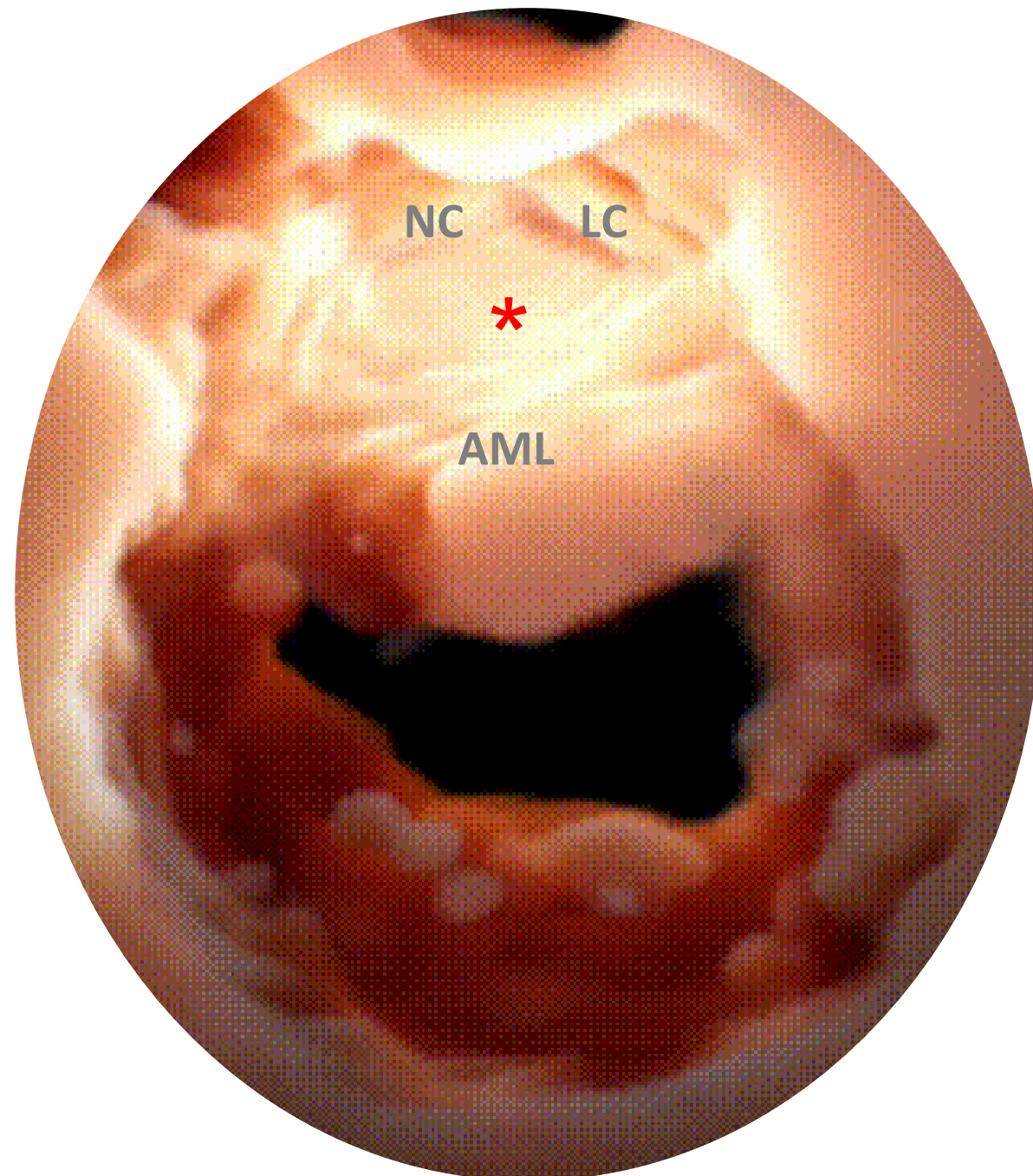
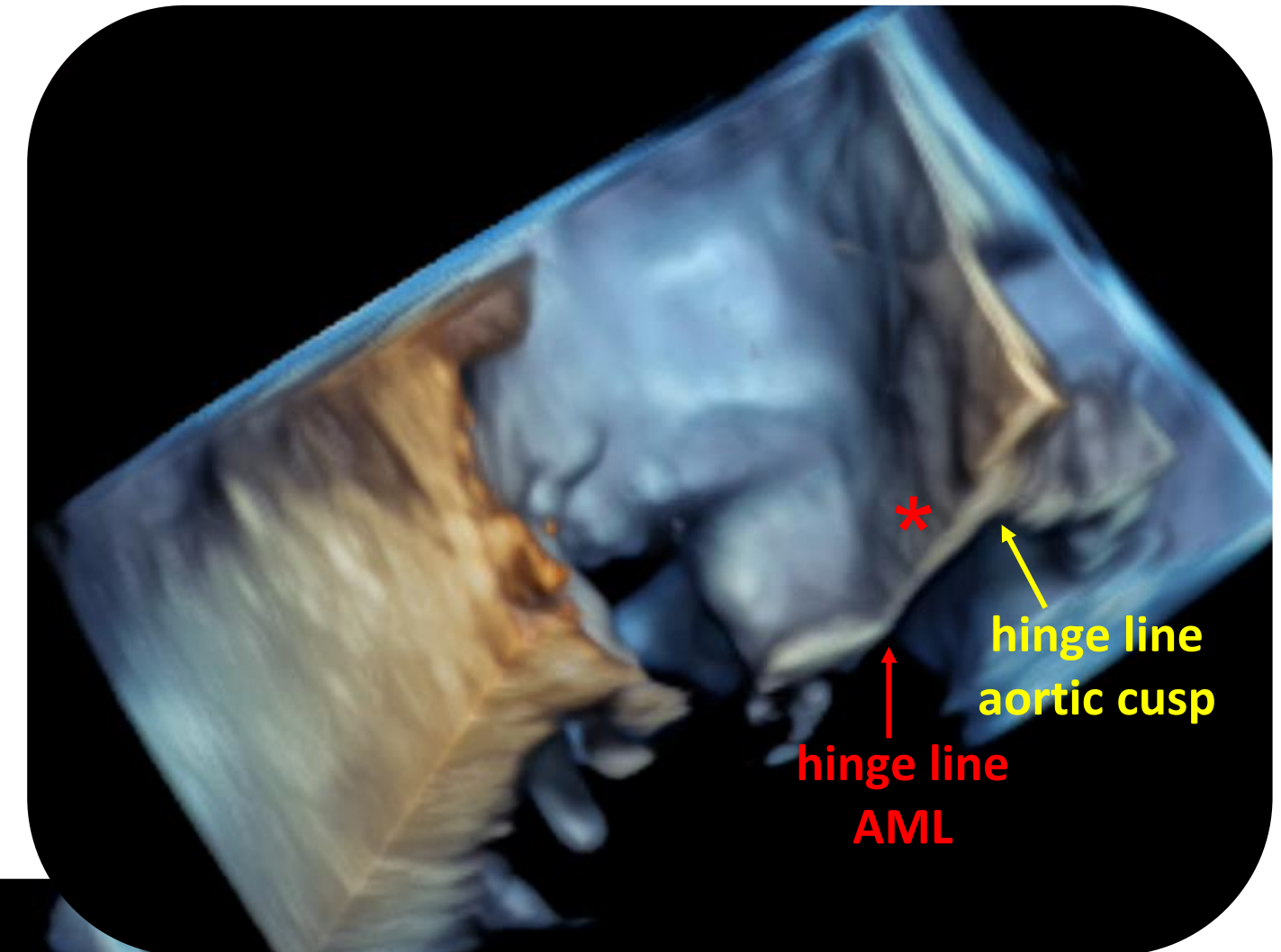
Corrado Fiore MD, FASE, FEACVI ¹; Francesca Lofrumento MD ²

¹ *Head of Cardiology Department and EchoLab, Città di Lecce Hospital - GVM, Italy*

² *Cardiology resident - Città di Lecce Hospital - University of Messina*

NO CONFLICTS OF INTEREST

AORTO-MITRAL CURTAIN *

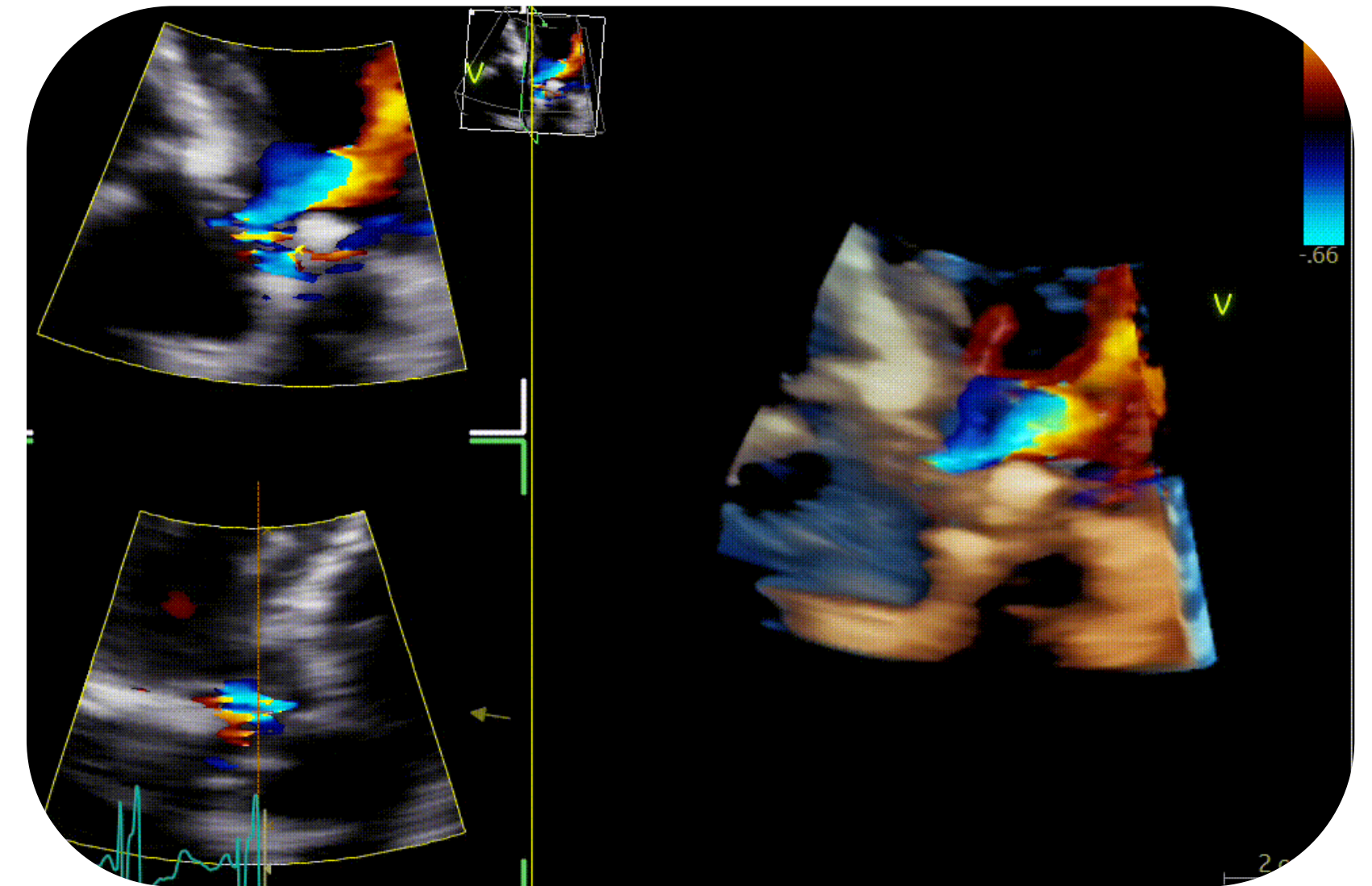
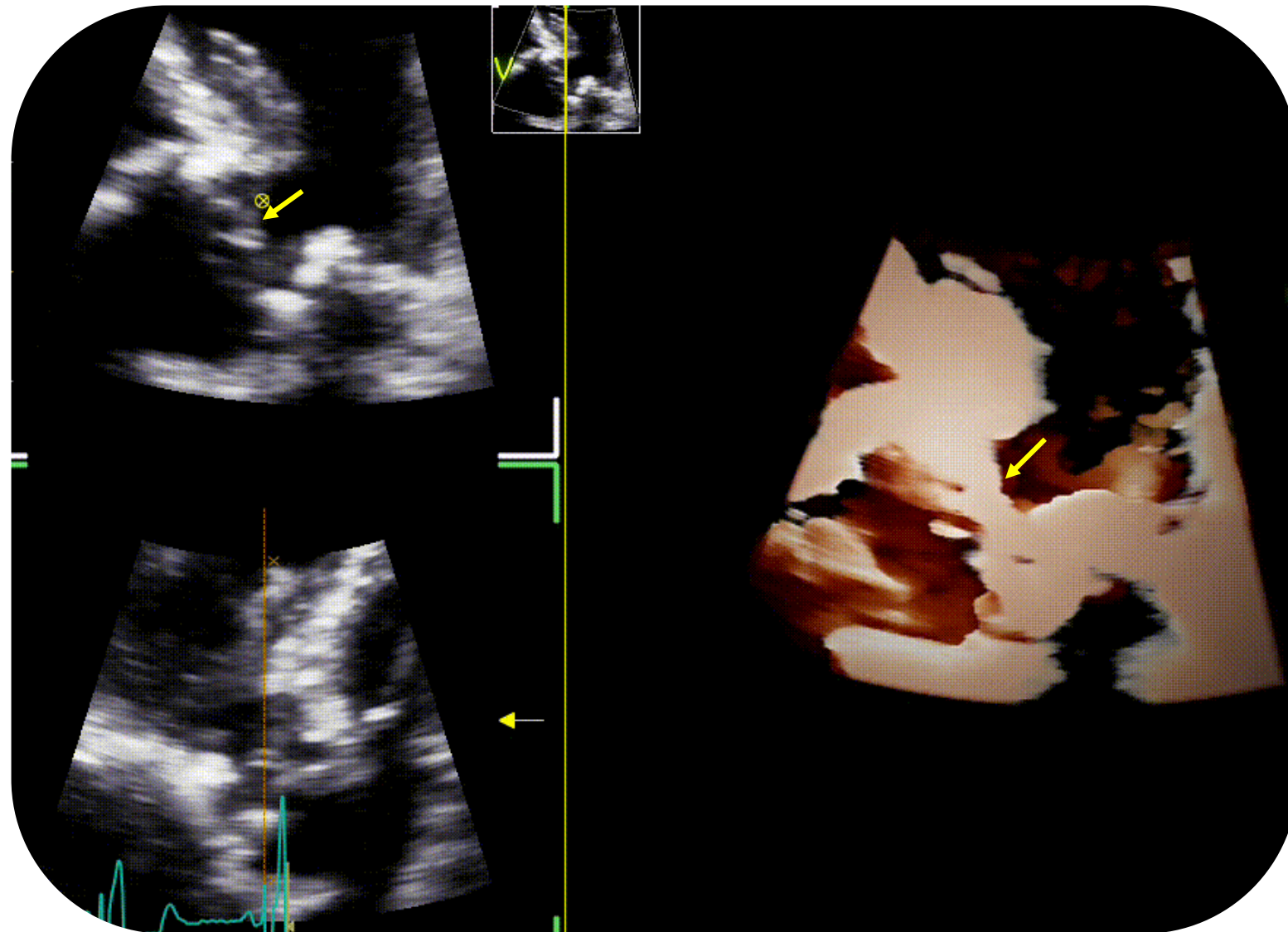


CLINICAL CASE 1

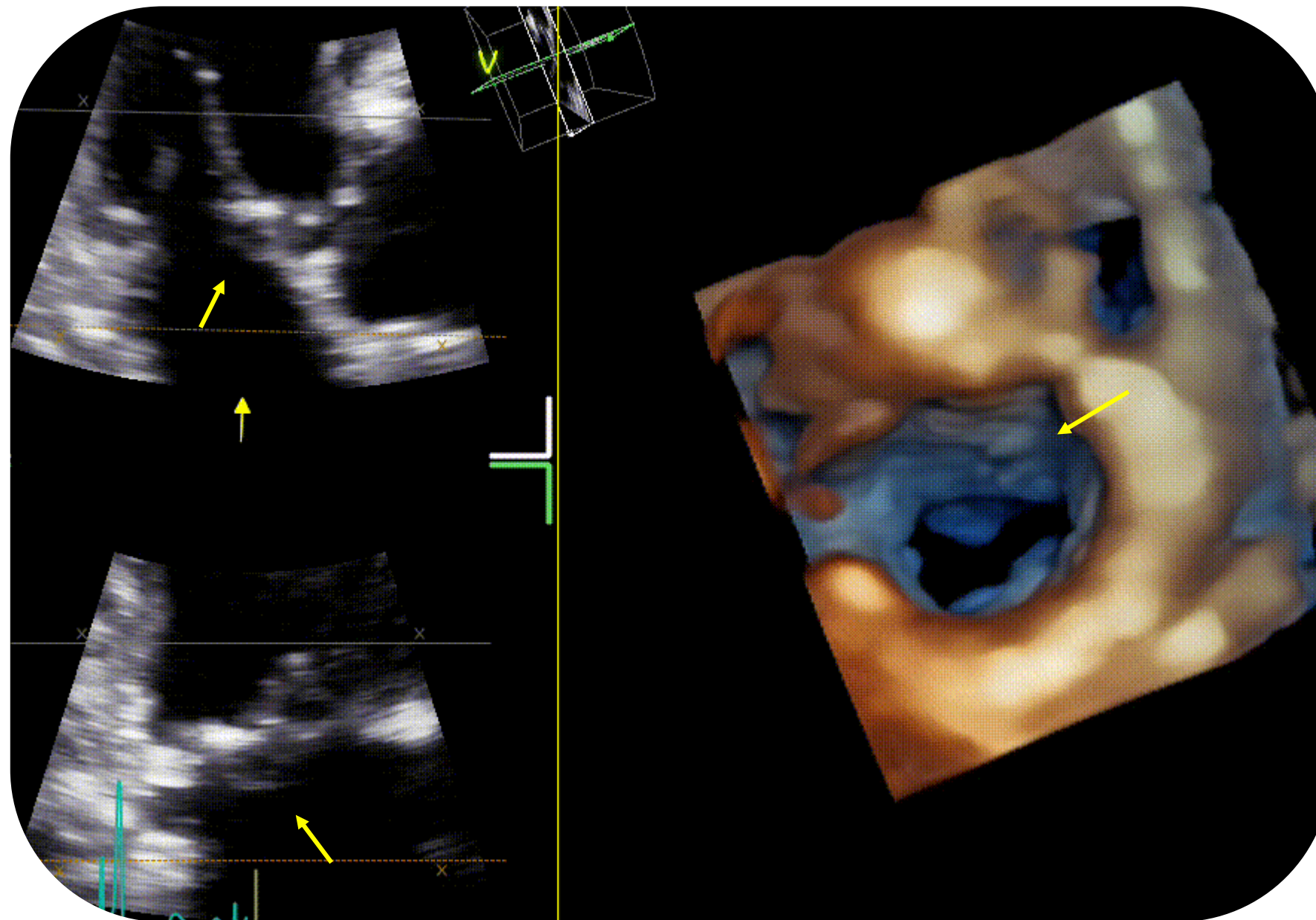
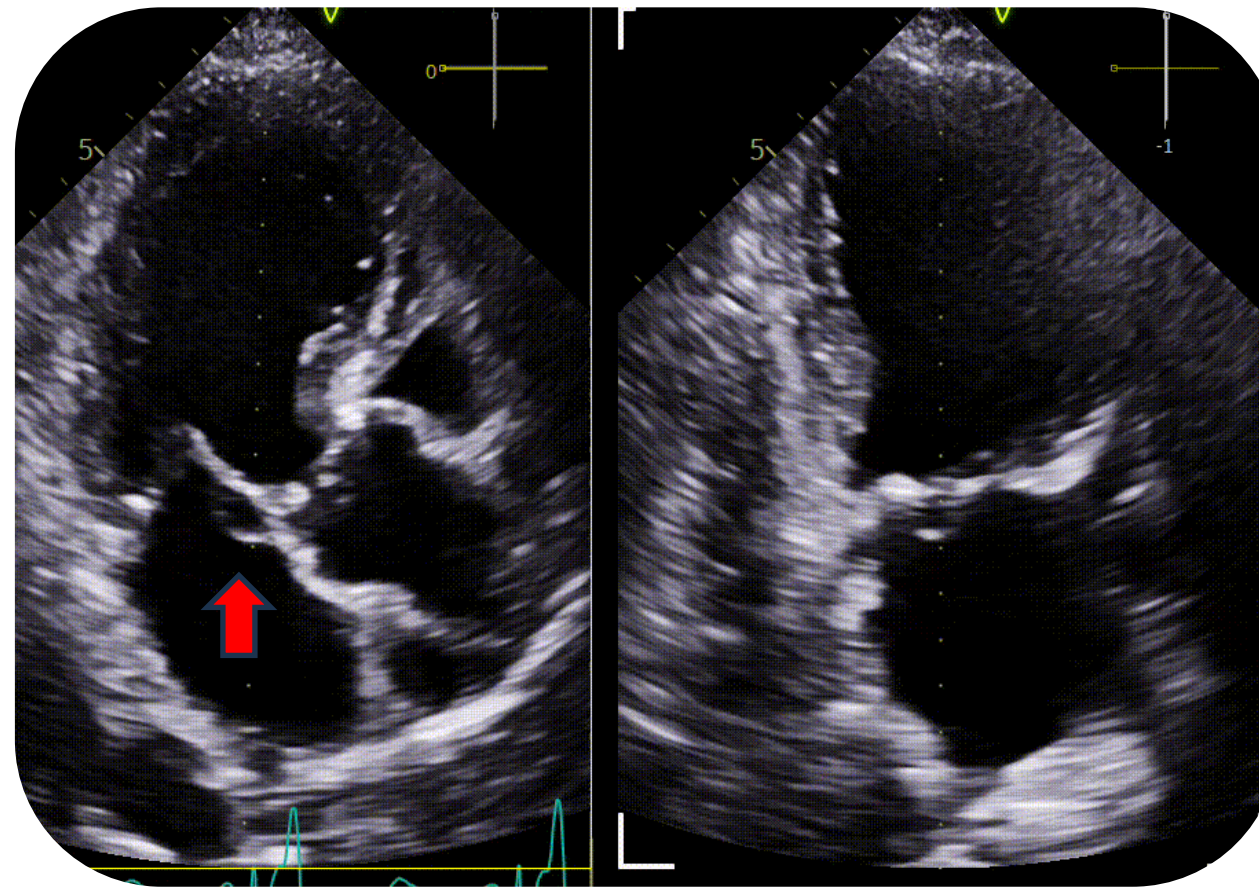
- A 72-year-old man was admitted to cardiac surgery for severe coronary artery disease (3 vessels: LAD, MO-Cx and RCA) + severe aortic valve regurgitation;
- No previous infections and/or connective tissue diseases.

ECHO FINDINGS

1. Severe left ventricular dysfunction (EF 30%)
2. Eccentric aortic regurgitation due to RC prolapse



... what about the mitral valve?

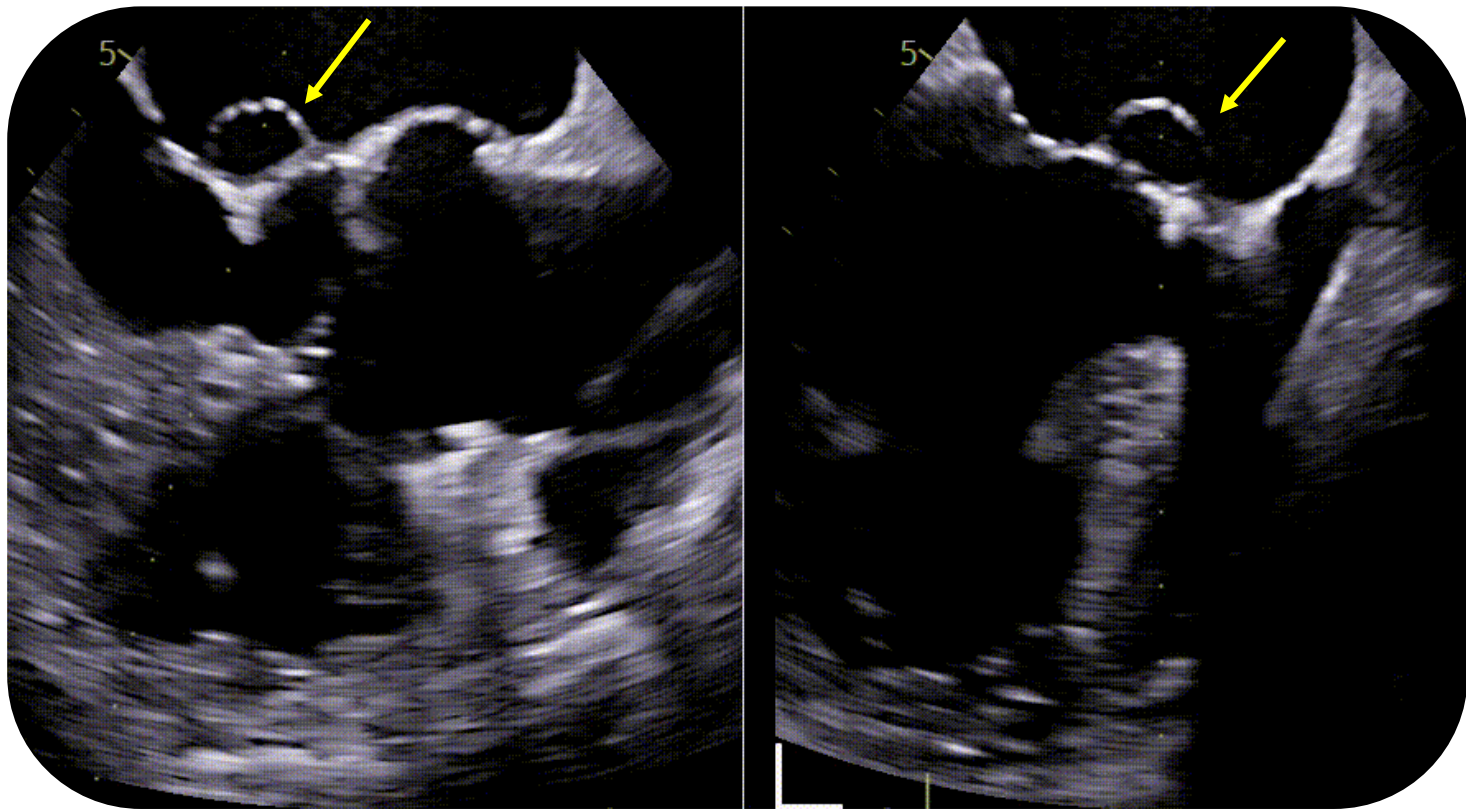


2D vs 3D TTE

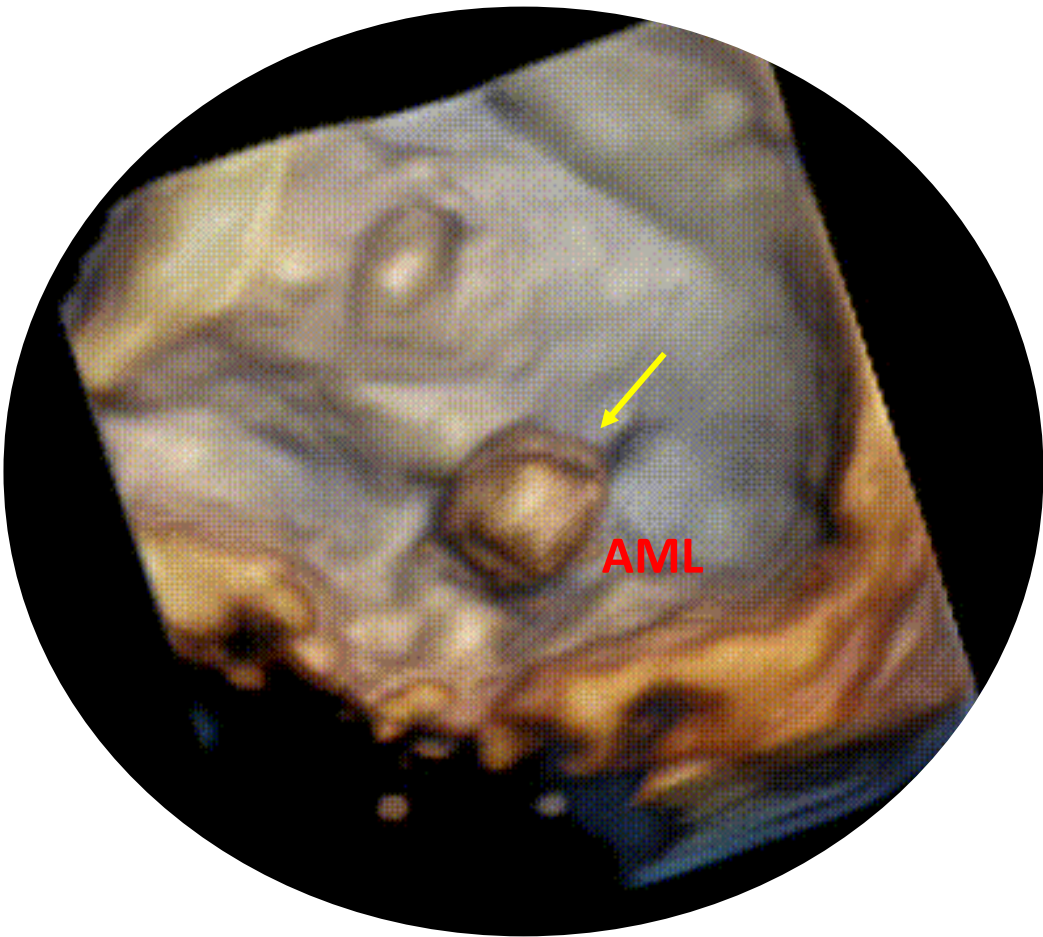
AML or aorto-mitral curtain



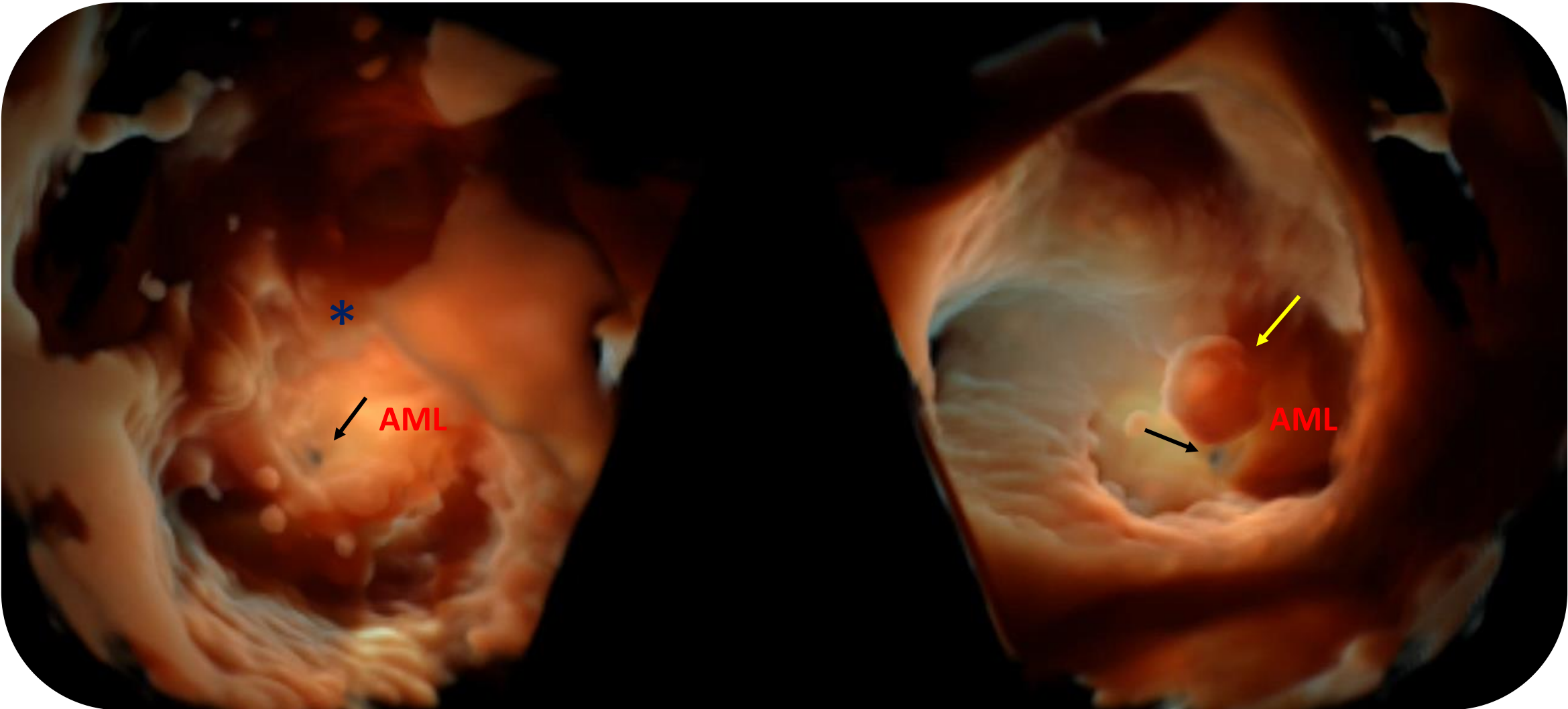
TEE



Anterior mitral leaflet (AML)
aneurysm



DEFINITION: a localized bulging structure of the mitral leaflet toward the left atrium, exhibiting systolic expansion and diastolic collapse



3D TEE Flexi-light from ventricular (left) and atrial (right) perspective of MV (mitral valve)

AML aneurysm etiology

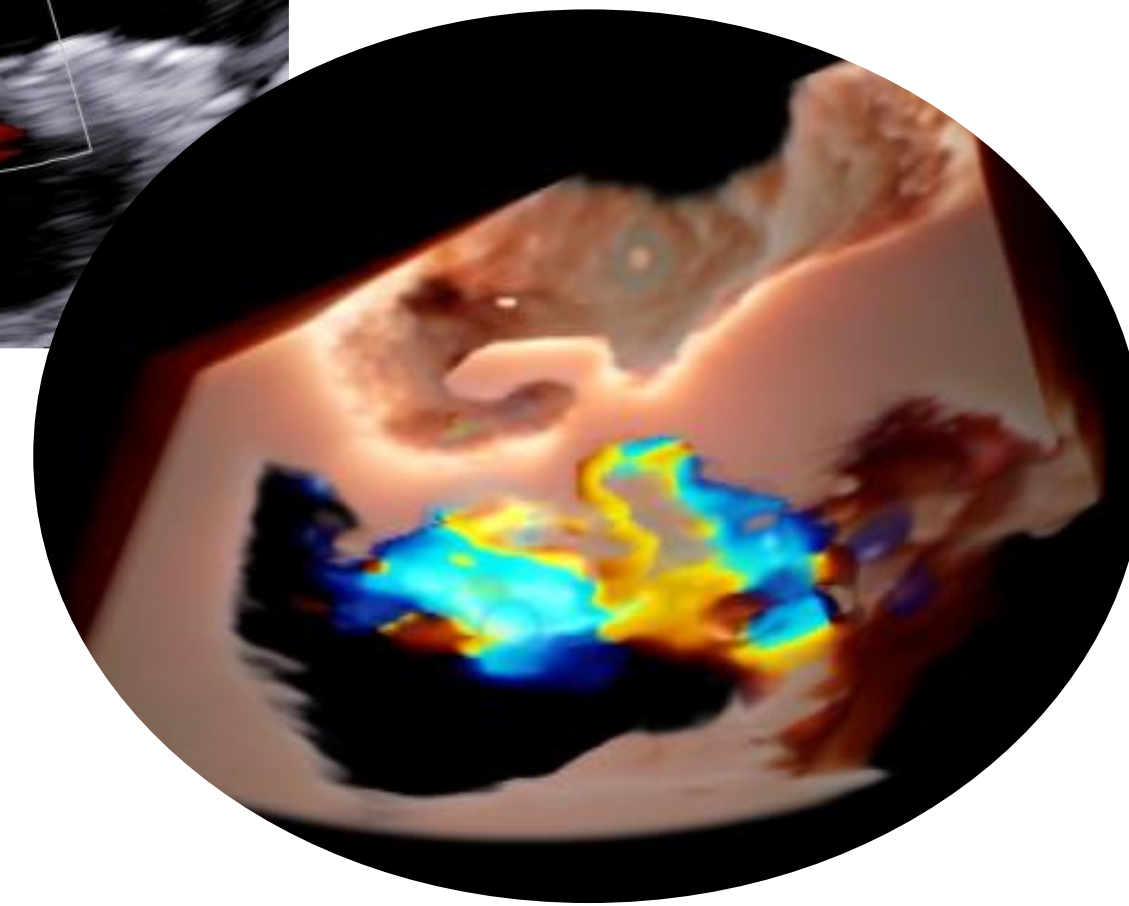
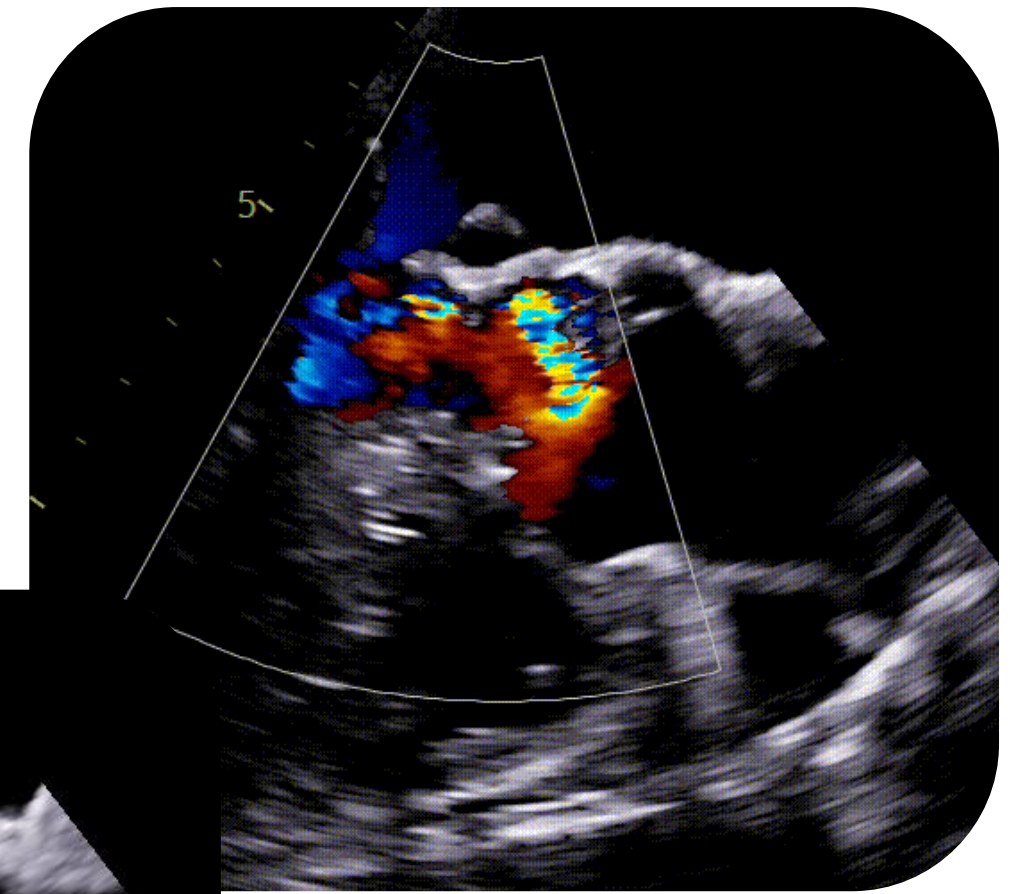
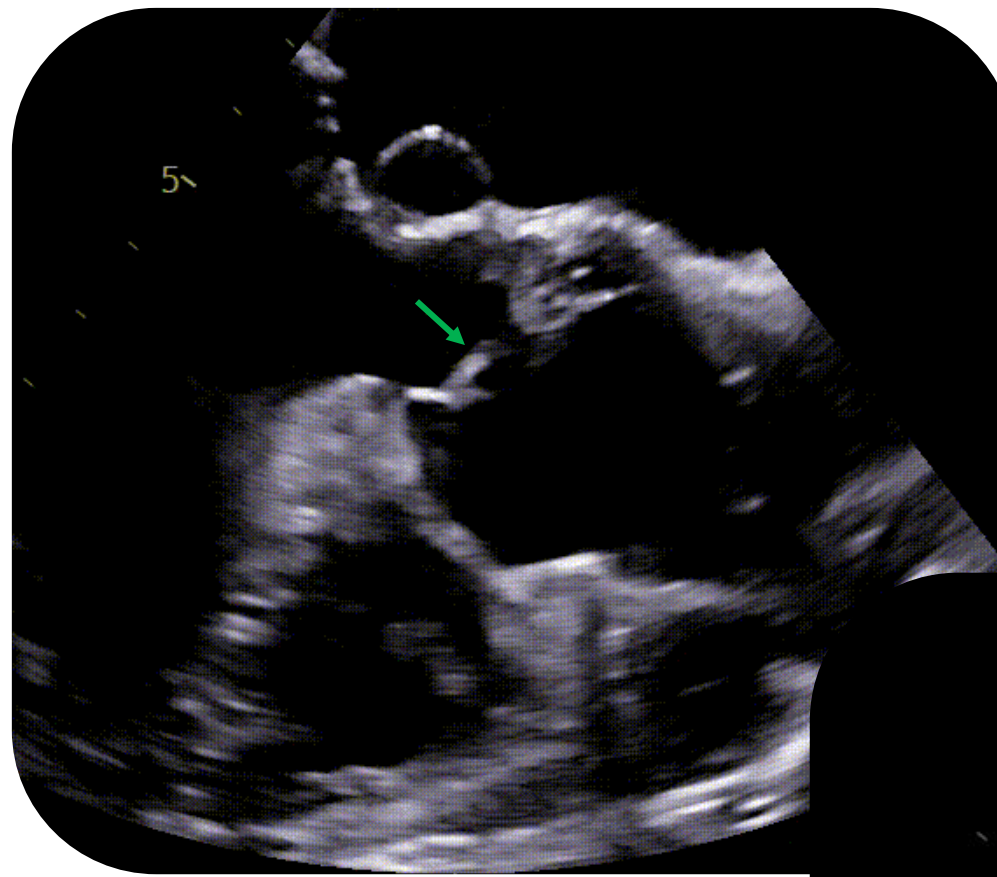
RC prolapse



severe eccentric aortic
regurgitation (AR) towards
the AML



AML aneurysm due to jet lesion of AR

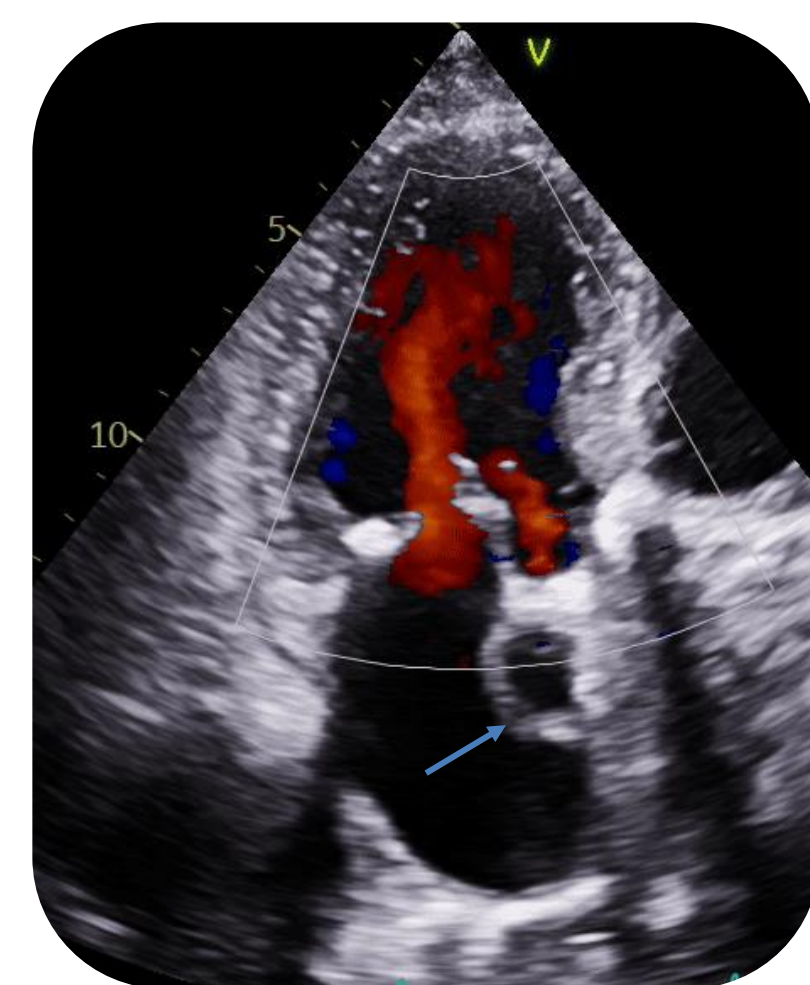
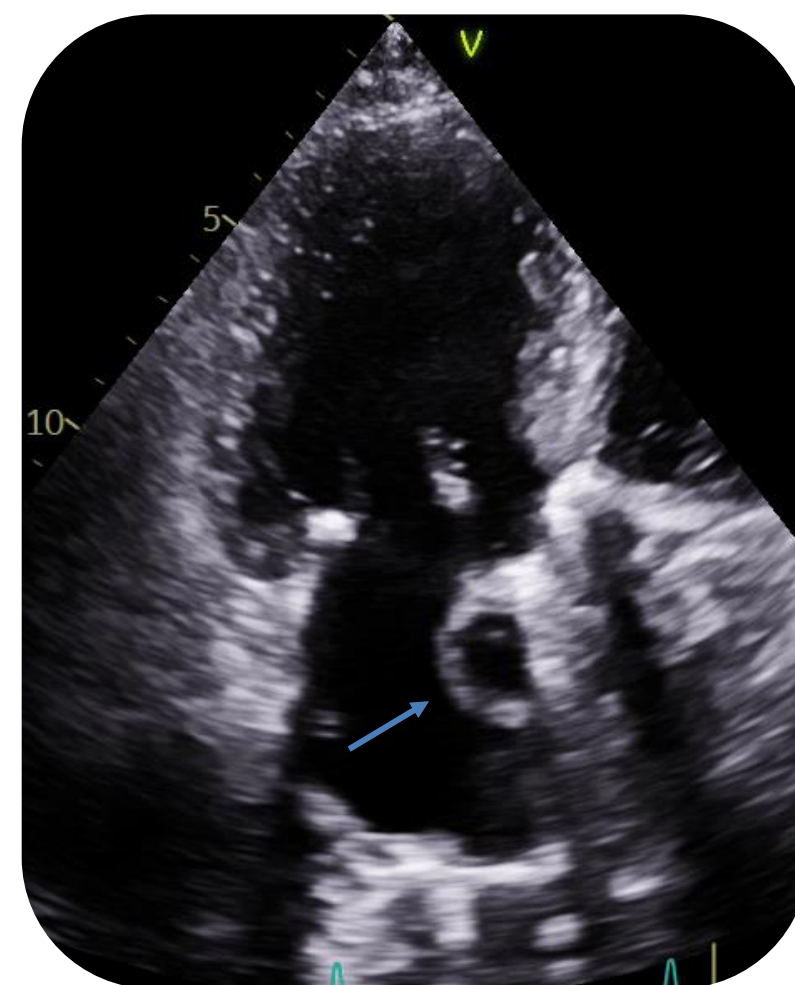
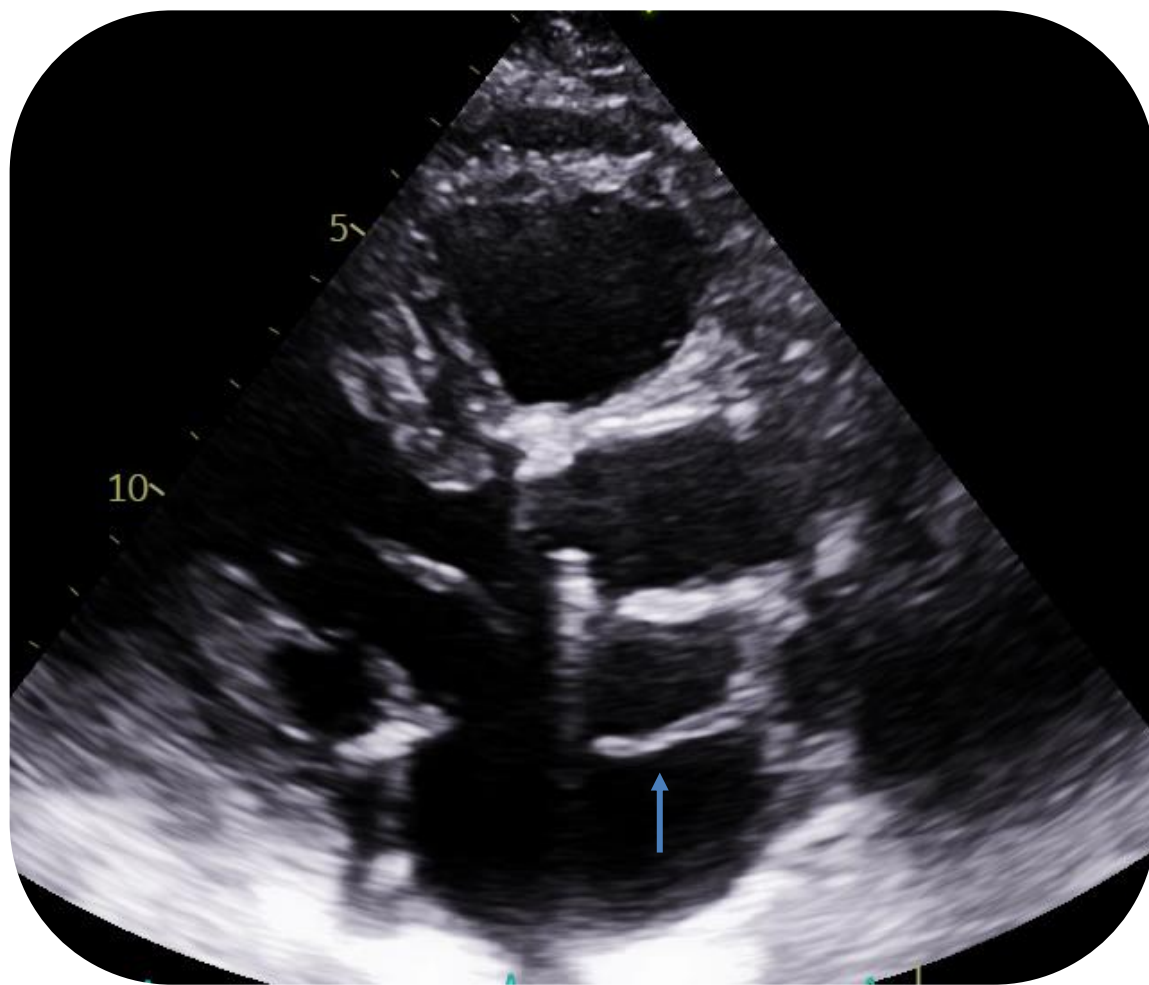


Surgical treatment: CABG X 3 + aortic and mitral valve replacement

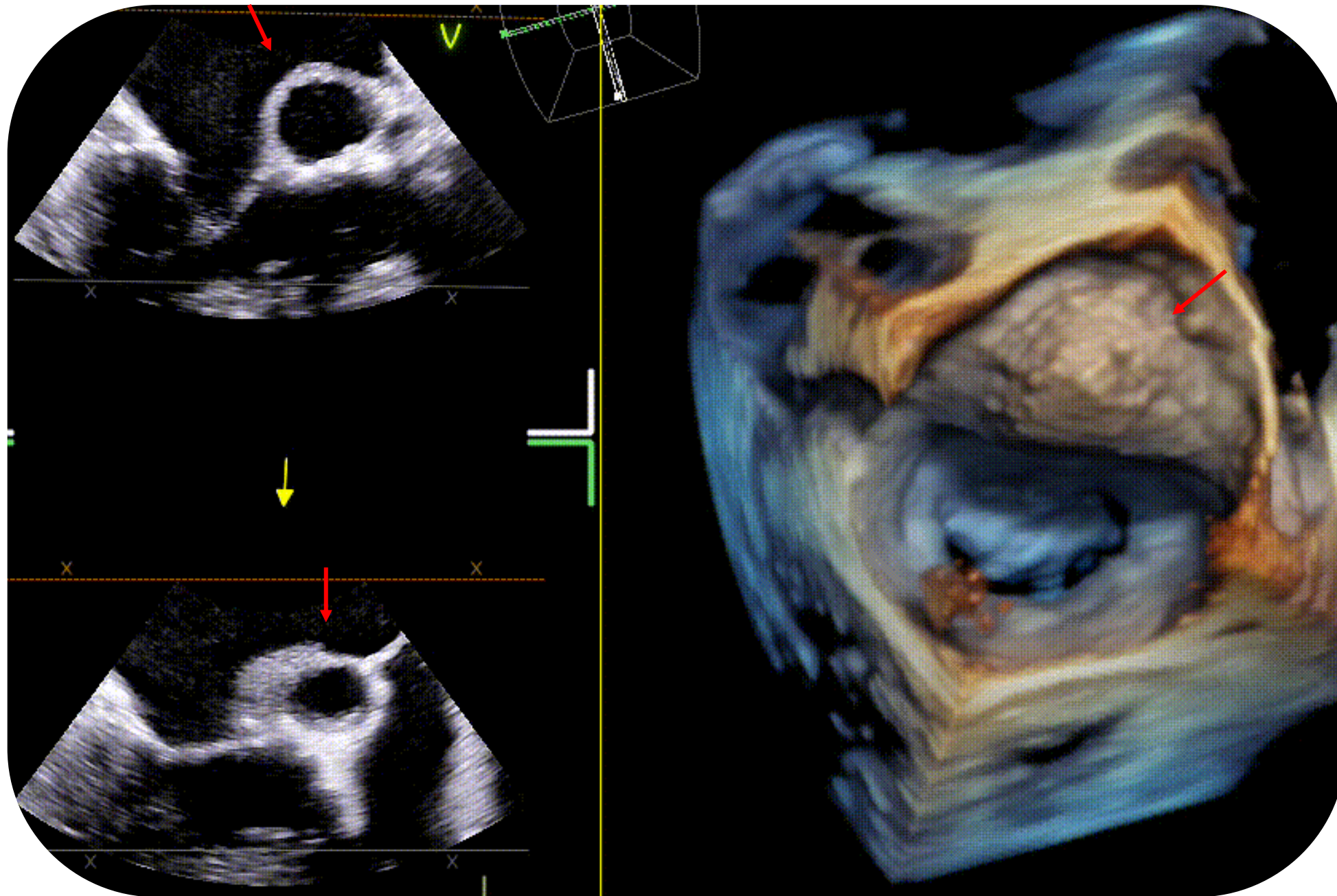
CLINICAL CASE 2

- A 77-years-old man underwent a routine echocardiographic follow-up;
- Past medical history: at age 50 aortic valve replacement with mechanical prosthesis (Sorin Bicarbon 23 mm) for a severe aortic stenosis in BAV (bicuspid aortic valve);
- No recent or previous infections.

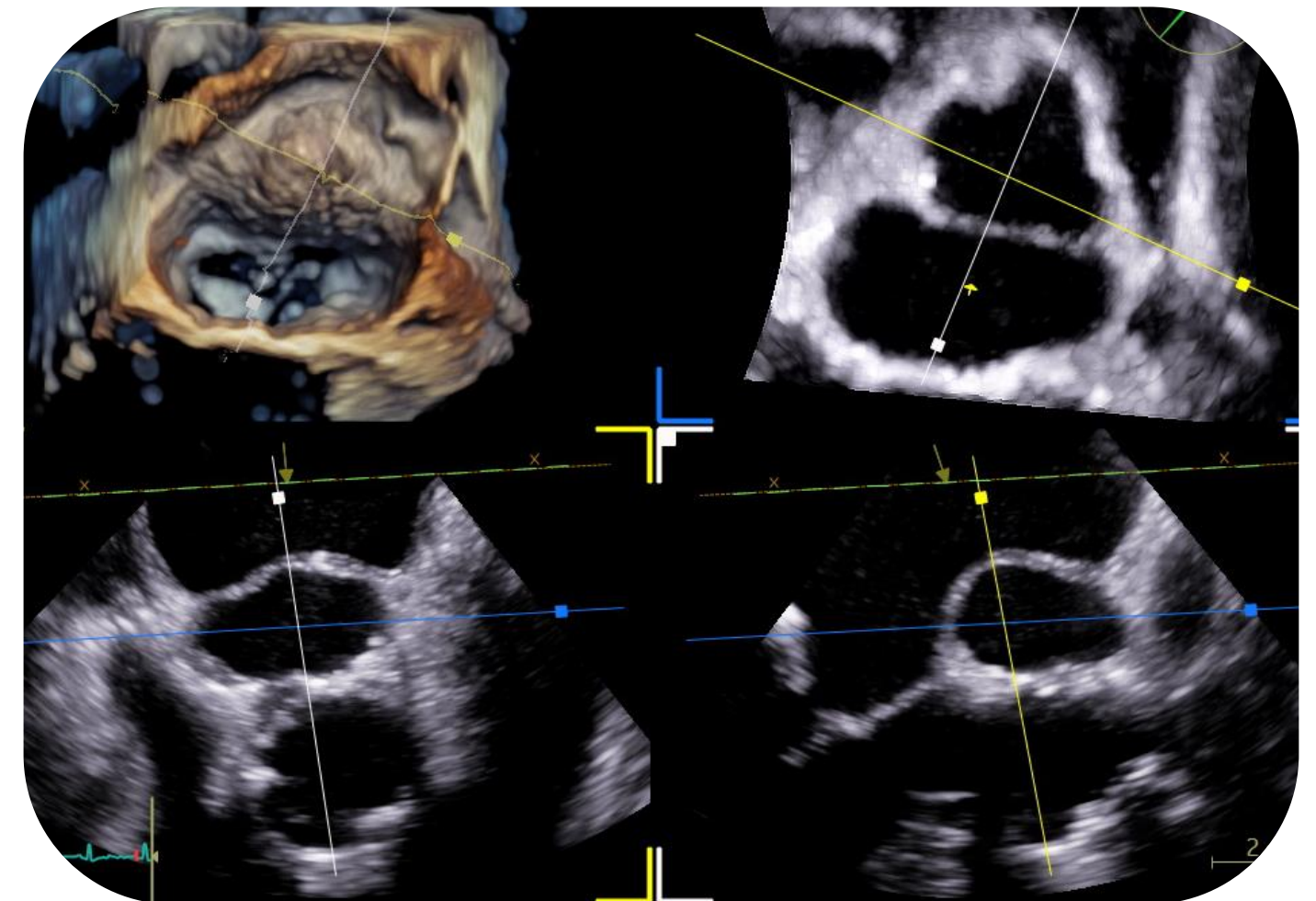
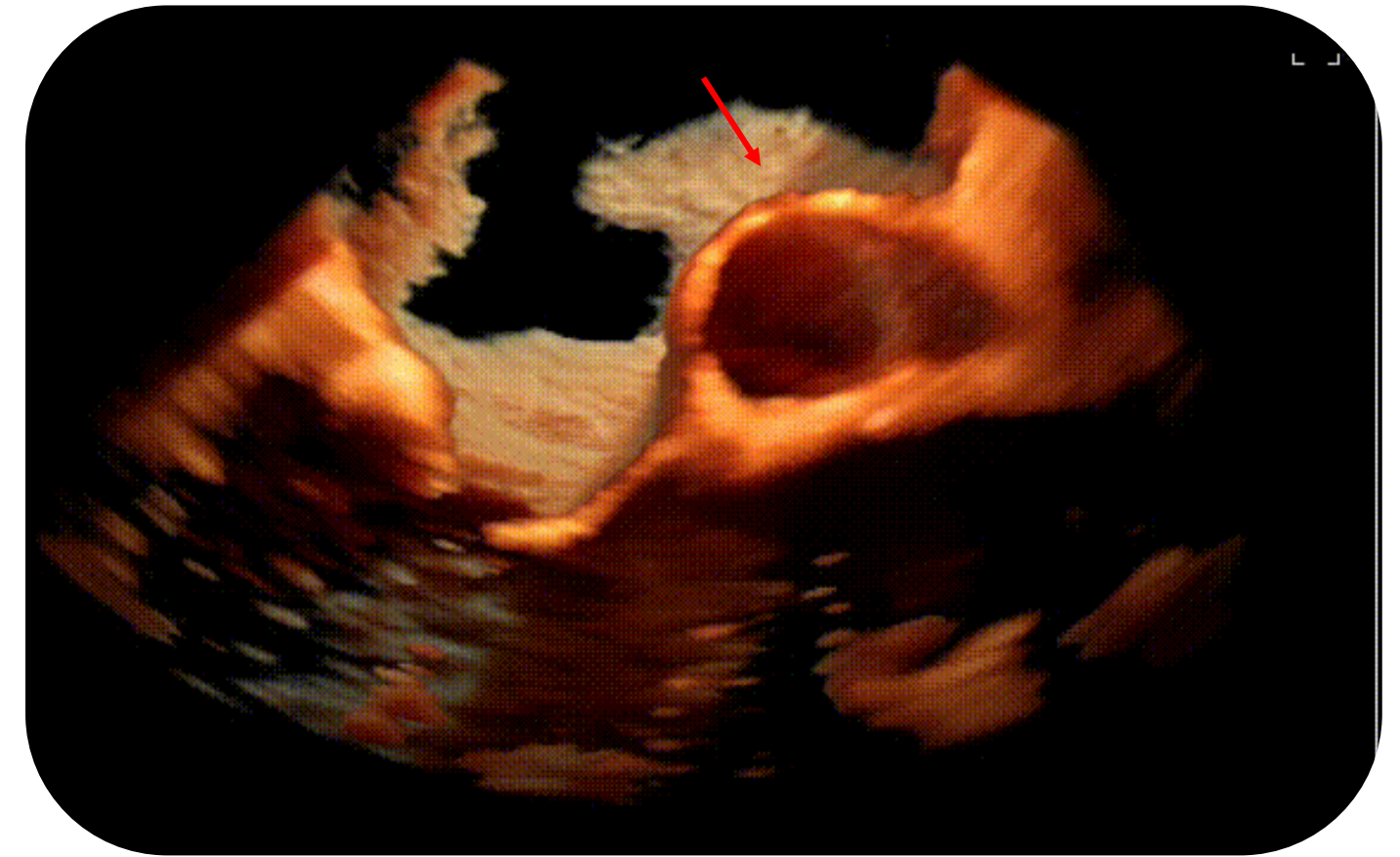
ECHO FINDINGS



What about this pulsatile echo-free structure?



A huge pseudoaneurysm of aorto-mitral curtain



DEFINITION: a pulsatile echo-free pouch located between posterior aortic root and anterior mitral leaflet with systolic expansion and diastolic collapse, communicating with the LV cavity

Aorto-mitral curtain pseudoaneurysm etiology

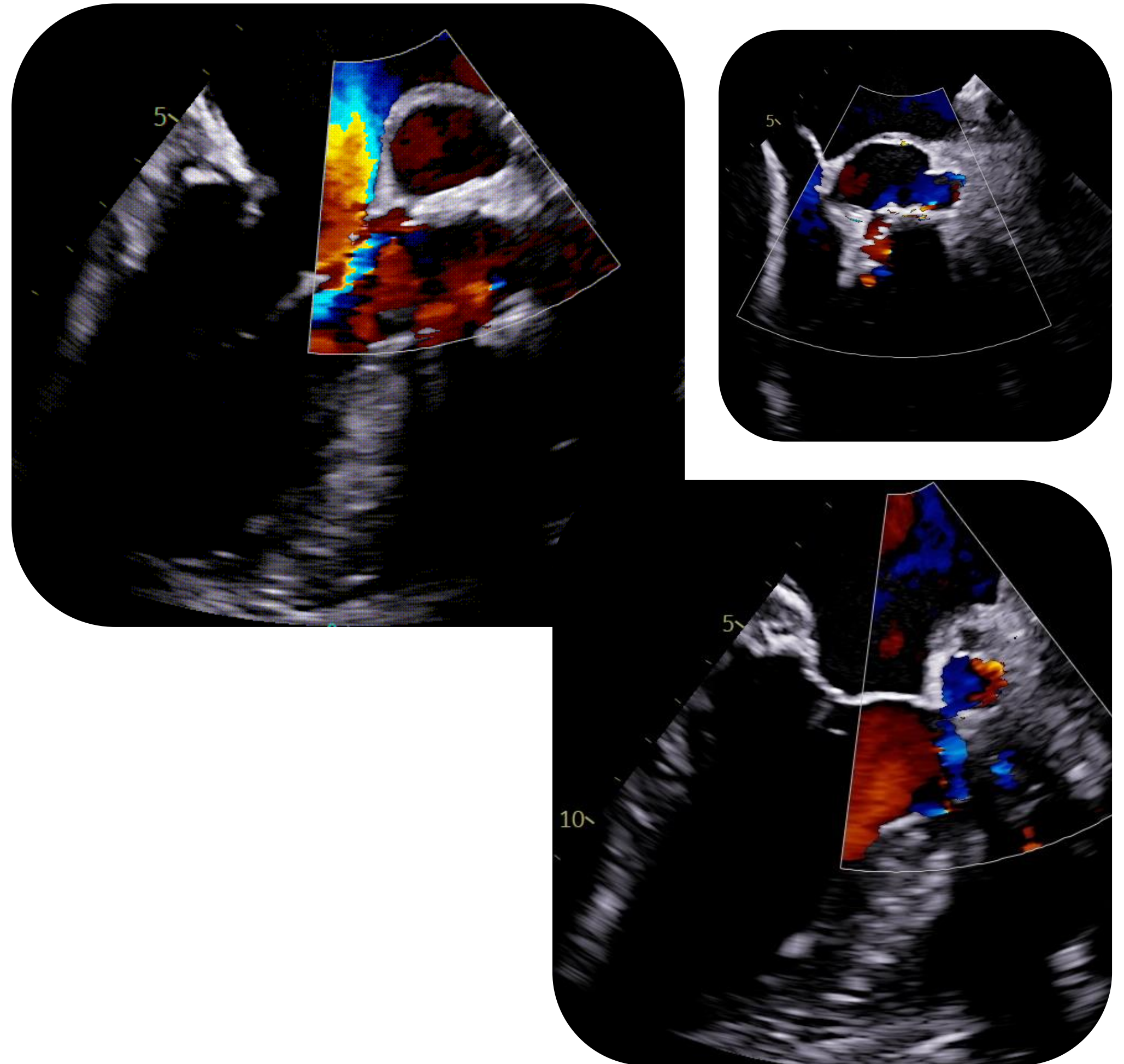
Previous subclinical infective endocarditis



Partial prosthesis dehiscence with mild-to-moderate (VC 4 mm) posterior (at 12') periprosthetic leak



Paraprosthetic complication:
a huge pseudoaneurysm of aorto-mitral curtain communicating with the LVOT



Surgical treatment: aortic valve replacement + aneurysmal neck suture

CONCLUSION

- The close anatomical contiguity between AML, aorto-mitral curtain and aortic cusps can challenge echo diagnosis of similar pathological conditions affecting these structures.
- 3D TEE has been proved to be crucial in differential diagnosis process, which is essential for the correct therapeutic approach.



THANK YOU FOR THE ATTENTION